

ILLUSTRATED PARTS BREAKDOWN

BERNARD

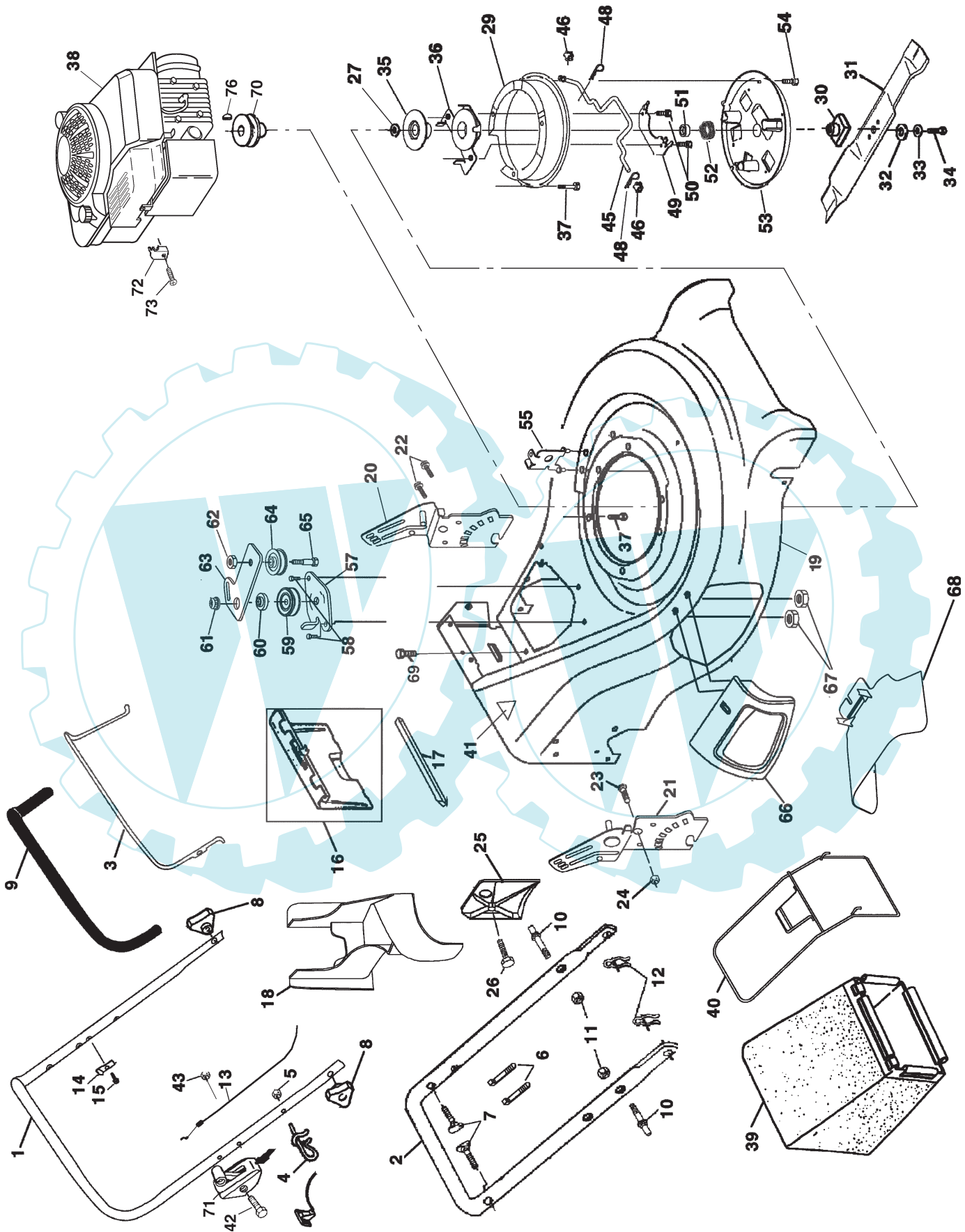
5.5 HP LAWN MOWER

MODEL NO. BL6053T (BL6053TE)

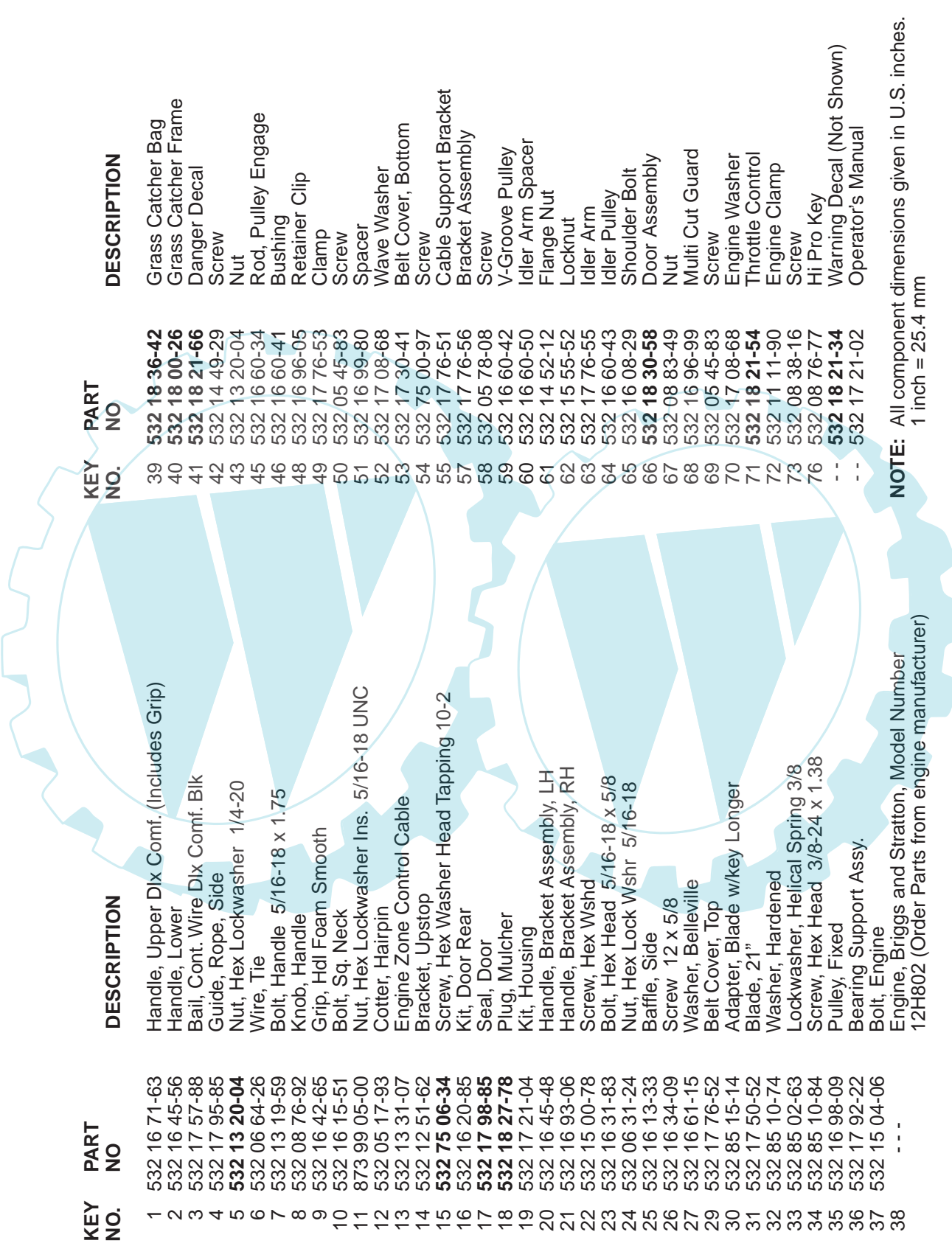
964 77 25-00

Ihr Ersatzteilspezialist im Internet

ROTARY LAWN MOWER--MODEL NUMBER BL6053T (BL6053TE) PRODUCT NUMBER 964 77 25-00



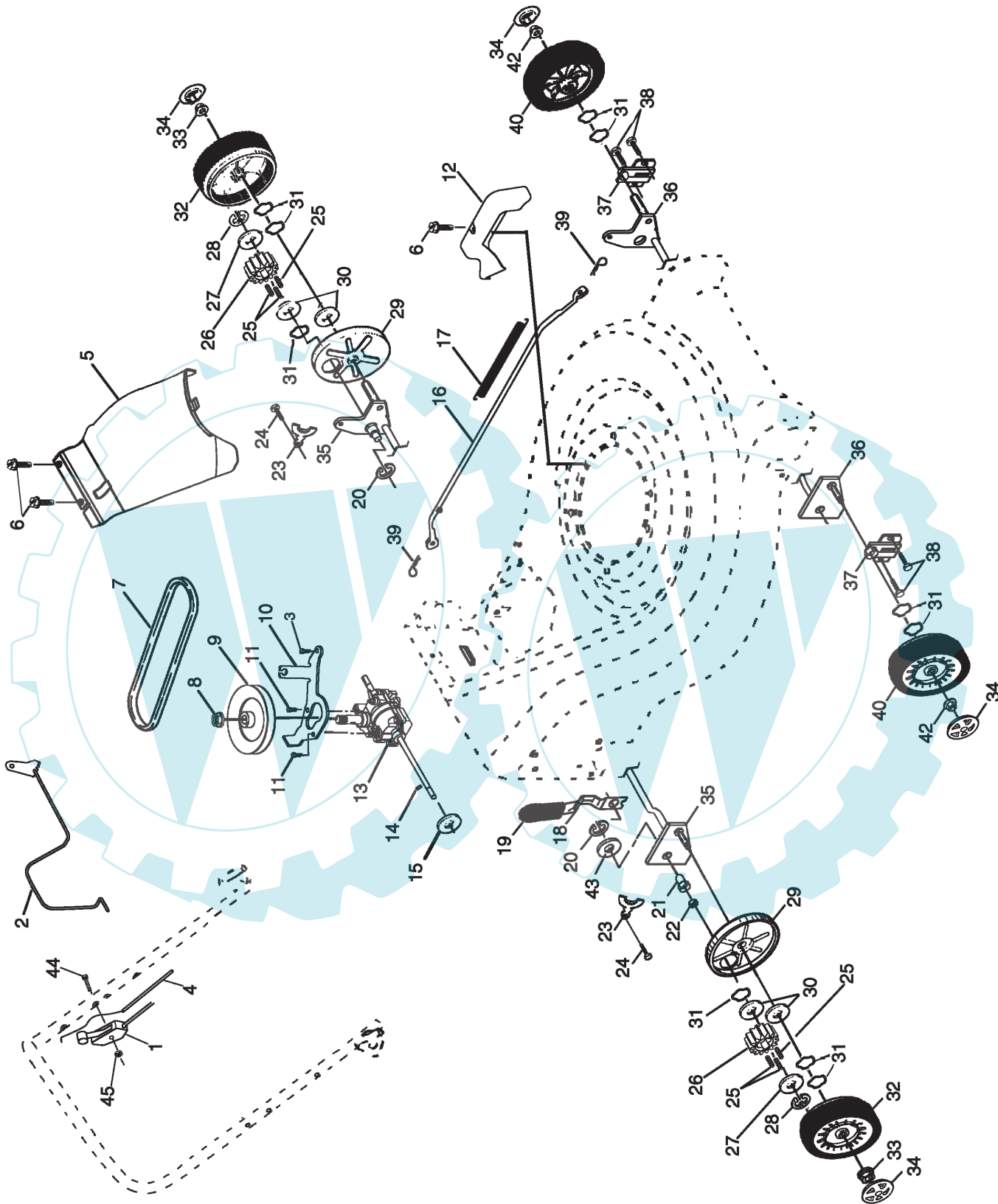
ROTARY LAWN MOWER - MODEL NUMBER BL6053T (BL6053TE) PRODUCT NUMBER 964 77 25-00



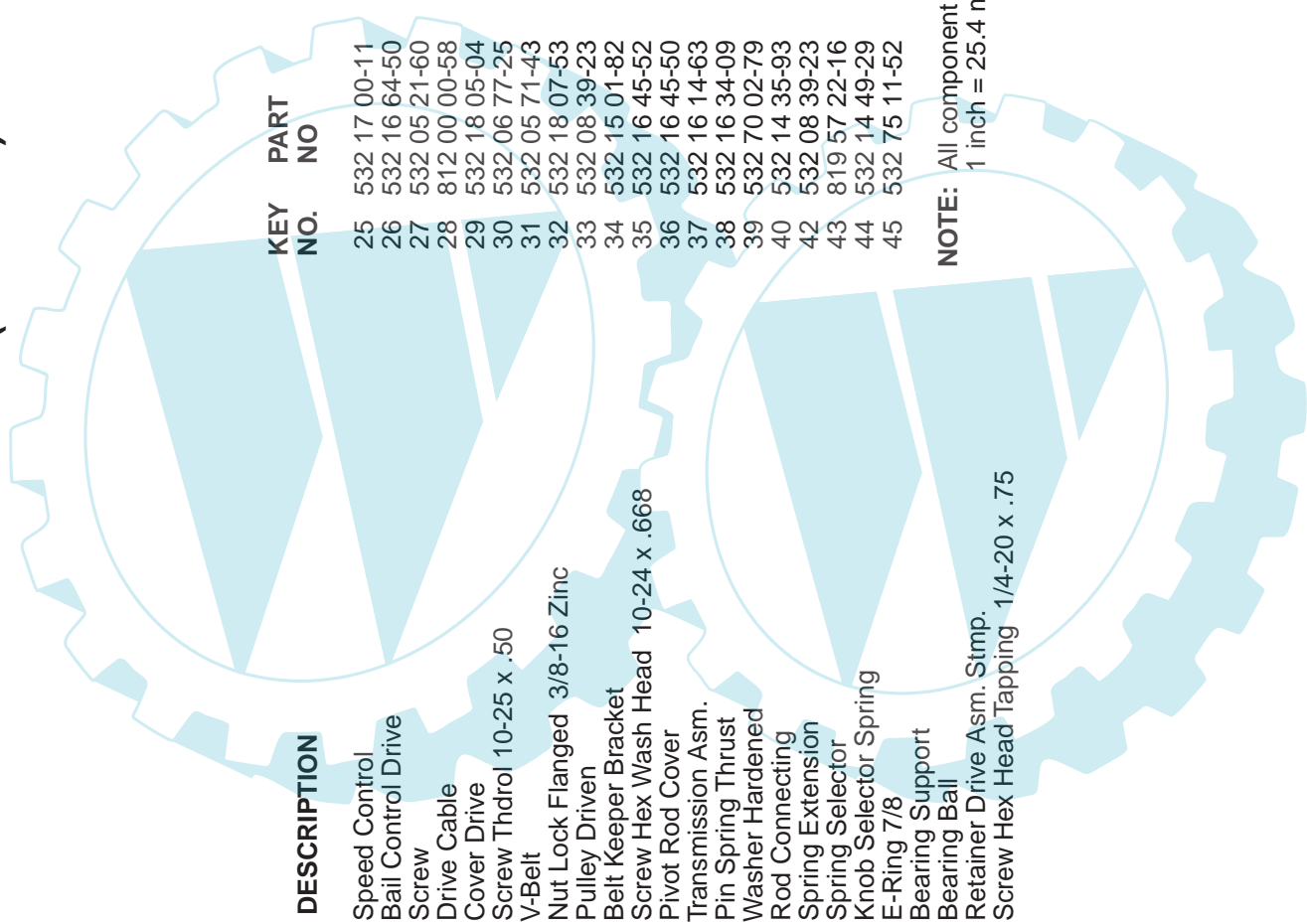
KEY NO.	PART NO	DESCRIPTION	KEY NO.	PART NO	DESCRIPTION
1	532 16 71-63	Handle, Upper Dlx Comf. (Includes Grip)	39	532 18 36-42	Grass Catcher Bag
2	532 16 45-56	Handle, Lower	40	532 18 00-26	Grass Catcher Frame
3	532 17 57-88	Bail, Cont. Wire Dlx Comf. Blk	41	532 18 21-66	Danger Decal
4	532 17 95-85	Guide, Rope, Side	42	532 14 49-29	Screw
5	532 13 20-04	Nut, Hex Lockwasher 1/4-20	43	532 13 20-04	Nut
6	532 06 64-26	Wire, Tie	45	532 16 60-34	Rod, Pulley Engage
7	532 13 19-59	Bolt, Handle 5/16-18 x 1.75	46	532 16 60-41	Bushing
8	532 08 76-92	Knob, Handle	48	532 16 96-05	Retainer Clip
9	532 16 42-65	Grip, Hdl Foam Smooth	49	532 17 76-53	Clamp
10	532 16 15-51	Bolt, Sq. Neck	50	532 05 45-83	Screw
11	873 99 05-00	Nut, Hex Lockwasher Ins. 5/16-18 UNC	51	532 16 99-80	Spacer
12	532 05 17-93	Cotter, Hairpin	52	532 17 08-68	Wave Washer
13	532 13 31-07	Engine Zone Control Cable	53	532 17 30-41	Belt Cover, Bottom
14	532 12 51-62	Bracket, Upstop	54	532 75 00-97	Screw
15	532 75 06-34	Screw, Hex Washer Head Tapping 10-2	55	532 17 76-51	Cable Support Bracket
16	532 16 20-85	Kit, Door Rear	57	532 17 76-56	Bracket Assembly
17	532 17 98-85	Seal, Door	58	532 05 78-08	Screw
18	532 18 27-78	Plug, Mulcher	59	532 16 60-42	V-Groove Pulley
19	532 17 21-04	Kit, Housing	60	532 16 60-50	Idler Arm Spacer
20	532 16 45-48	Handle, Bracket Assembly, LH	61	532 14 52-12	Flange Nut
21	532 16 93-06	Handle, Bracket Assembly, RH	62	532 15 55-52	Locknut
22	532 15 00-78	Screw, Hex Wshd	63	532 17 76-55	Idler Arm
23	532 16 31-83	Bolt, Hex Head 5/16-18 x 5/8	64	532 16 60-43	Idler Pulley
24	532 06 31-24	Nut, Hex Lock Wshr 5/16-18	65	532 16 08-29	Shoulder Bolt
25	532 16 13-33	Baffle, Side	66	532 18 30-58	Door Assembly
26	532 16 34-09	Screw 12 x 5/8	67	532 08 83-49	Nut
27	532 16 61-15	Washer, Belleville	68	532 16 96-99	Multi Cut Guard
29	532 17 76-52	Belt Cover, Top	69	532 05 45-83	Screw
30	532 85 15-14	Adapter, Blade w/key Longer	70	532 17 08-68	Engine Washer
31	532 17 50-52	Blade, 21"	71	532 18 21-54	Throttle Control
32	532 85 10-74	Washer, Hardened	72	532 11 11-90	Engine Clamp
33	532 85 02-63	Lockwasher, Helical Spring 3/8	73	532 08 38-16	Screw
34	532 85 10-84	Screw, Hex Head 3/8-24 x 1.38	76	532 08 76-77	Hi Pro Key
35	532 16 98-09	Pulley, Fixed	--	532 18 21-34	Warning Decal (Not Shown)
36	532 17 92-22	Bearing Support Assy.	--	532 17 21-02	Operator's Manual
37	532 15 04-06	Bolt, Engine			
38	---	Engine, Briggs and Stratton, Model Number 12H802 (Order Parts from engine manufacturer)			

NOTE: All component dimensions given in U.S. inches.
1 inch = 25.4 mm

ROTARY LAWN MOWER--MODEL NUMBER BL6053T (BL6053TE) PRODUCT NUMBER 964 77 25-00



ROTARY LAWN MOWER- -MODEL NUMBER BL6053T (BL6053TE) PRODUCT NUMBER 964 77 25-00



KEY NO.	PART NO	DESCRIPTION	KEY NO.	PART NO	DESCRIPTION
1	532 17 10-50	Speed Control	25	532 17 00-11	Drive Pawl
2	532 17 57-86	Bail Control Drive	26	532 16 64-50	Pinion, Drive
3	532 05 45-83	Screw	27	532 05 21-60	Washer
4	532 17 90-49	Drive Cable	28	812 00 00-58	E-Ring 7/16
5	532 16 15-37	Cover Drive	29	532 18 05-04	Cover, Dust Wheel
6	532 75 06-34	Screw Thdrol 10-25 x .50	30	532 06 77-25	Washer 1/2 x 1-1/2 x .134
7	532 16 60-60	V-Belt	31	532 05 71-43	Wave Washer
8	532 13 20-10	Nut Lock Flanged 3/8-16 Zinc	32	532 18 07-53	Wheel 9 x 2
9	532 16 60-49	Pulley Driven	33	532 08 39-23	Nut Hex Flange Lock
10	532 17 76-54	Belt Keeper Bracket	34	532 15 01-82	Hubcap, Mag Platinum 8"
11	817 54 10-11	Screw Hex Wash Head 10-24 x .668	35	532 16 45-52	Shaft Asm. Rear
12	532 16 61-89	Pivot Rod Cover	36	532 16 45-50	Shaft Asm. Front
13	532 16 63-88	Transmission Asm.	37	532 16 14-63	Retainer Front Shaft
14	532 14 53-54	Pin Spring Thrust	38	532 16 34-09	Screw 12 x 5/8
15	532 05 70-79	Washer Hardened	39	532 70 02-79	Clip Retainer
16	532 16 15-84	Rod Connecting	40	532 14 35-93	Wheel 8 x 2
17	532 16 16-02	Spring Extension	42	532 08 39-23	Nut, Hex Flange Lock 3/8-16
18	532 16 45-54	Spring Selector	43	819 57 22-16	Washer
19	532 16 19-61	Knob Selector Spring	44	532 14 49-29	Screw 1/4 x 2.12
20	812 00 00-22	E-Ring 7/8	45	532 75 11-52	Locknut
21	532 16 33-65	Bearing Support			
22	532 16 99-11	Bearing Ball			
23	532 16 45-55	Retainer Drive Asm. Stmp.			
24	532 05 78-08	Screw Hex Head Tapping 1/4-20 x .75			

NOTE: All component dimensions given in U.S. inches.
1 inch = 25.4 mm